

Mectac-C[®] STAND ALONE

ANTERIOR CERVICAL INTERBODY FUSION DEVICE

MODULAR DESIGN OFFERS FREEDOM OF CHOICE



Brochure

Joint

Spine

Sports Med

MECTA-C STAND ALONE

Mecta-C Stand Alone is indicated for use in patients suffering from Degenerative Disc Disease at multiple contiguous levels from C2 to T1.

ANGULAR STABILITY

- Divergent & Convergent screws combination
- Increased **pull-out strength**
- Enhanced in-situ primary **stability**



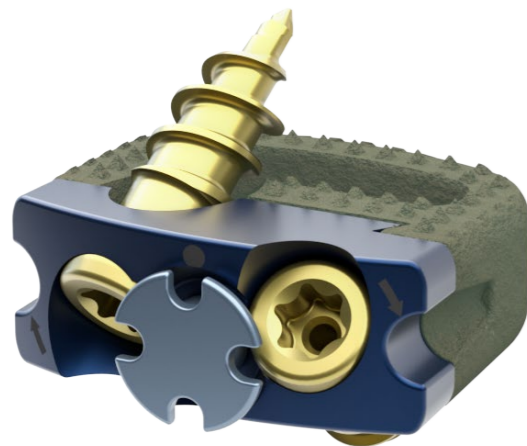
SIMPLICITY

Designed to simplify the surgical steps through an **easy and controlled implantation**.

Four plate configurations and angled instruments to cover different needs and **challenging anatomies**.

BONE GRAFT VOLUME

Wide central bone **graft area** may help to accelerate the occurrence of fusion through the implant.



CLEAR FUSION ASSESSMENT

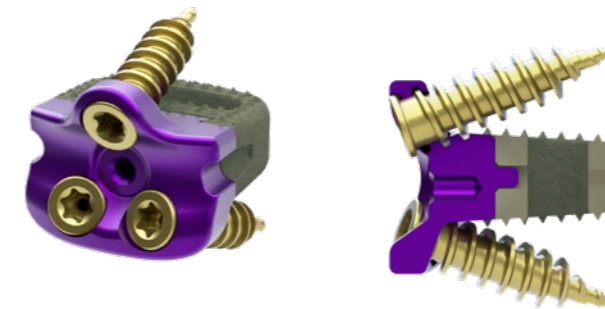
- Radiolucent **TiPEEK** cage
- Titanium marker with **limited image artifact**
- Accurate reference for **diagnostic assessment**

TIPEEK TECHNOLOGY

The modular Mecta-C Stand Alone system in conjunction with the TiPEEK bioactive⁽¹⁾ plasma-sprayed titanium coated cages, provides value to improved stability and enhanced **fusion** rate.

VERSATILE SYSTEM

Two different options allow the surgeons to select the one that will best suit their patient's needs.

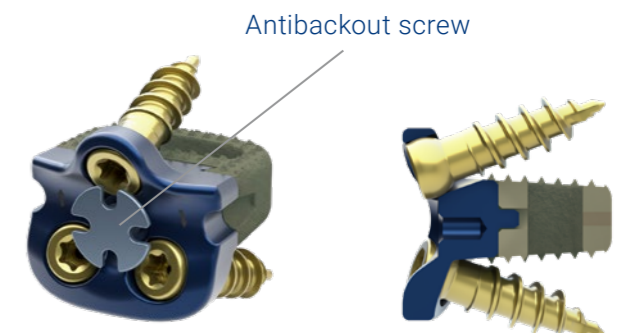


RIGID FIXATION

- **Locking Screw & Threaded Plate** for a secure rigid fixation of the construct
- **One step** screw lock system
- **Intrinsic Antibackout** system

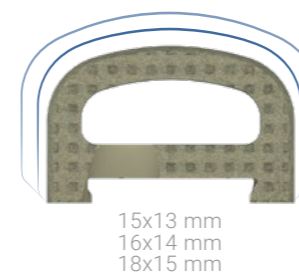
"VARIABLE" FIXATION

- Lag Screw & Unthreaded Plate to allow **micro-motion** and proper load distribution according to the Wolff's law^[2]
- **Physiological-like support** that may lead to a stable configuration
- Easy insertion of the central **Antibackout screw** to safely fix the Lag screw

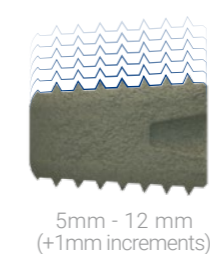


COMPREHENSIVE SYSTEM TO COVER DIFFERENT PATIENTS' NEEDS

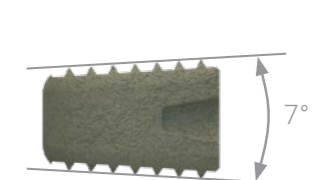
Footprint [WxD]



Height [mm]

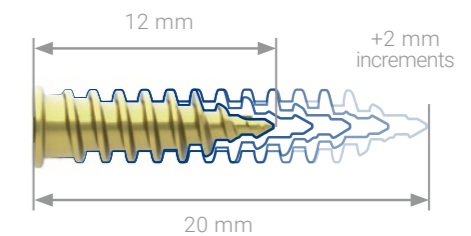
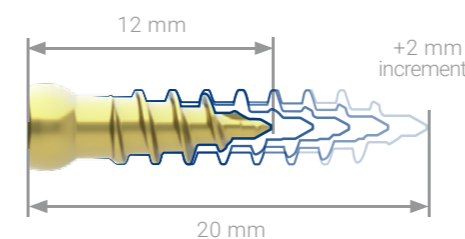


Lordosis



SCREWS

Self-Tapping & Self-Drilling screws are available both for Locking and Lag screws.

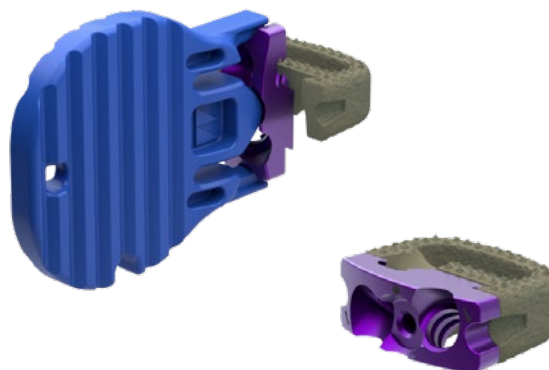


Mecta-C® STAND ALONE

MODULAR DESIGN OFFERS FREEDOM OF CHOICE

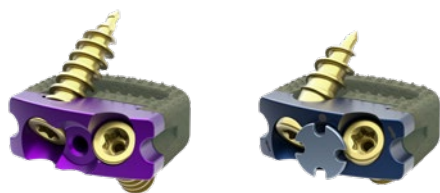
Universal cage to plate «snap-in» concept allows **1-click** construct **assembly**:

- Easy **intraoperative assembly** through the dedicated instrumentation
- Create an **indication-specific** interbody fusion device
- One cage **fits in four plate configurations**



MULTIPLE CONFIGURATIONS

FLUSH



Zero-Profile construct, minimal impact, reduced irritation

TRIO



High **Stability** minimizing the number of screws

HYBRID



Reduces the risk of impingement with surrounding anatomical structures. Best fit design for C7-T1 or C2-C3.

QUATTRO



Offers improved **Stability and Torsional Resistance**. The convergent/divergent screw trajectory minimize the adjacent level interference in multilevel fixation.

REFERENCES

[1] B. Walsh et al. Effect of titanium coating on PEEK osteoconductivity in an ovine model, 8° M.O.R.E. International Symposium [2] H.M. Frost, Wolff's Law and bone's structural adaptations to mechanical usage: an overview for clinicians, Angled Ortho 1994

All trademarks are property of their respective owners and are registered at least in Switzerland. This document is not intended for the US market. Please verify approval of the devices described in this document with your local Medacta representative.

