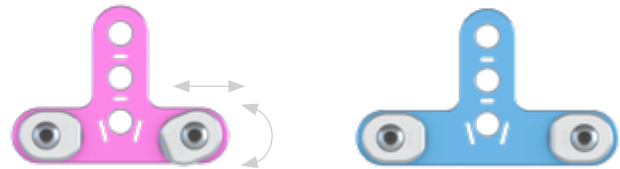
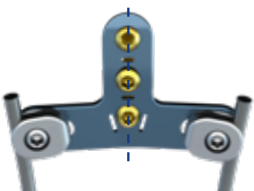


OCCIPITO-CERVICAL FUSION


The Occipital Plate offers **flexibility** to extend and further **stabilise** the posterior cervical construct.




OC PLATES
Small and large design to accommodate different patient anatomy




SCREW ALIGNMENT
Screws **aligned** along the external protuberance to **maximise bone purchase**



SNAP-IN
Adjustable OC Plate connectors with **Snap-in** feature to facilitate rod engagement



Primary



Rescue

SCREWS
Flat tip design with aggressive groove to facilitate **screw insertion**

UNIQUE SYNERGY WITH MYSPINE CERVICAL

Guided insertion of the **M.U.S.T. MINI screws** thanks to the **MySpine Cervical**, a 3D patient matched technology based on pre-operative planning designed for **pedicle screw** positioning.

- **Steered pedicle screw** insertion
- **Increased stability** vs lateral masses screws trajectory
- **Drastic reduction** in radiation exposure for patients and OR Staff



COMING SOON

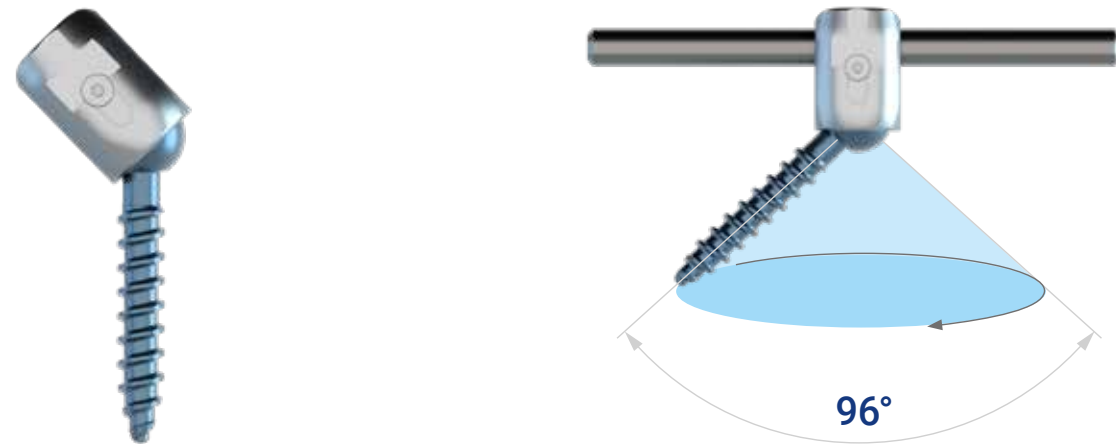
All trademarks and registered trademarks are the property of their respective owners.
This document is not intended for the US market. Please verify approval of the devices described in this document with your local Medacta representative.



The **M.U.S.T. MINI** posterior cervical screw system is a **comprehensive solution** for fixation of the occipito-cervico-thoracic spine. The variety of screws, hooks, rods and connectors allows the surgeon to tailor the construct to the specific patient anatomy and pathology to be treated.

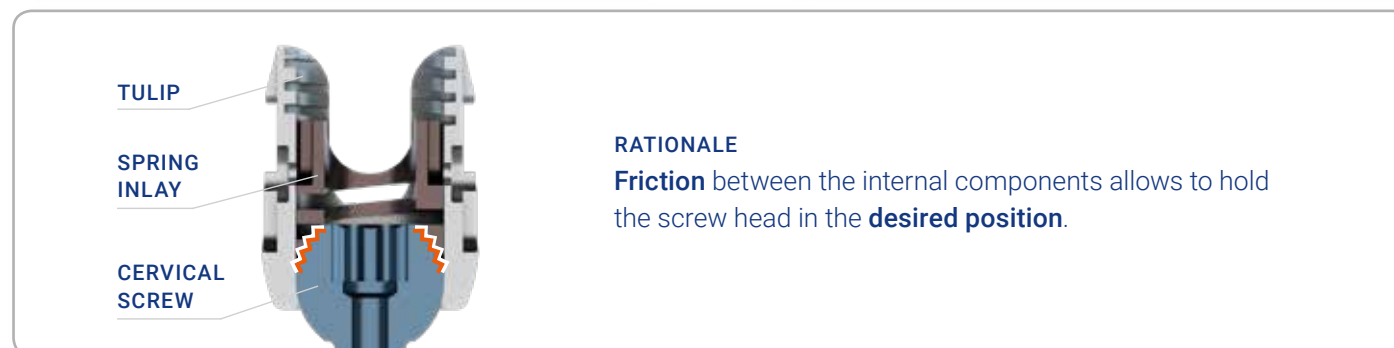
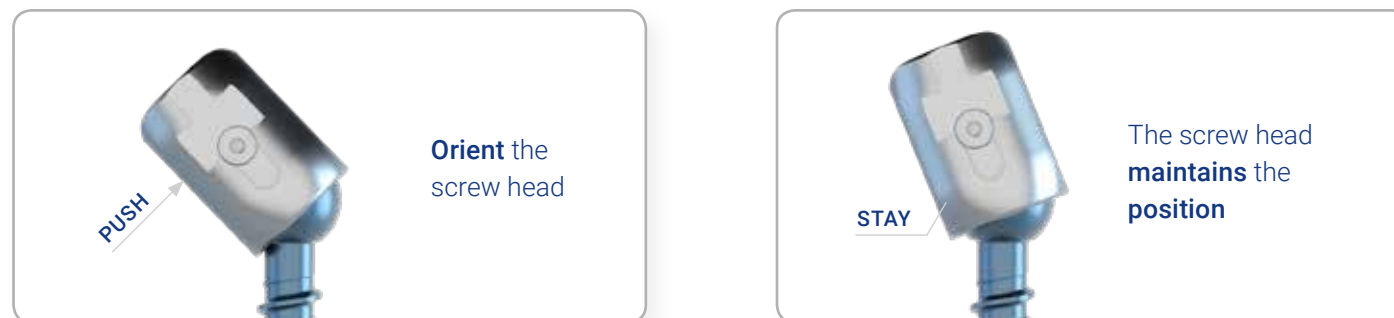
HIGH POLY-AXIALITY

The **broad range of motion**, up to 96° for the overall cone angle, eases the surgical practice in challenging anatomies.



UNIQUE FRICTION HEAD

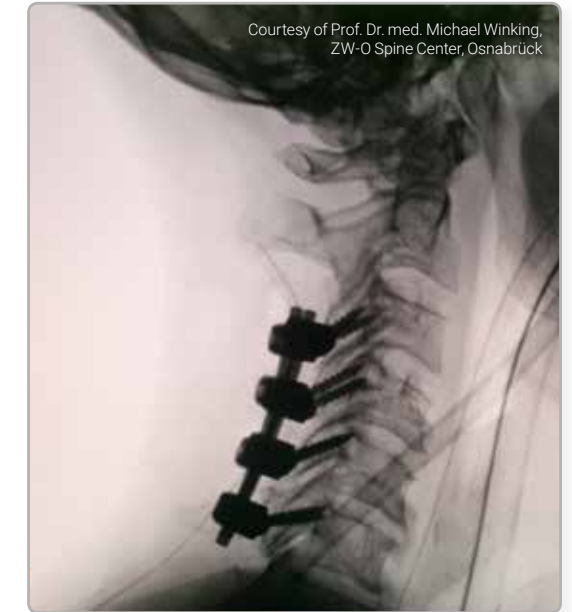
All the M.U.S.T. MINI screws have the **friction head** feature to facilitate **rod placement** and **ease of maneuvers** during surgery.



COMPREHENSIVE SOLUTION

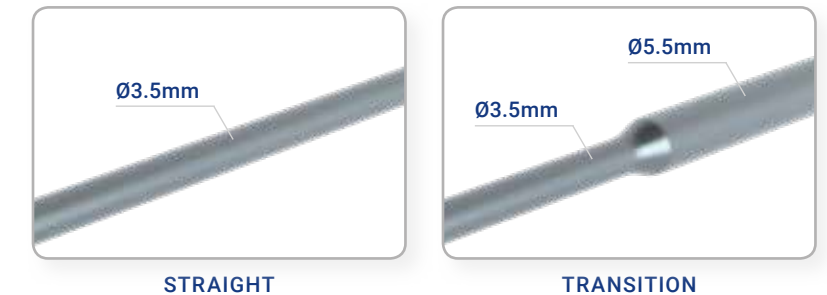
Screws:

- **Solid & Cannulated** Ø3.5, 4, 4.5mm
- **Full and partial** threaded



Rods:

- **CoCr** for superior construct stability
- **Transition rods** for cervico-thoracic fixation



ARTIFICIAL SPINOUS PROCESS

Seating between the neck muscles allows to:

- **Fix and adapt** the **neck muscles** in the midline
- **Safely secure** the **bone graft** with soft wires
- **Protect** in case of **spinous process** removal
- **Naturally reshape** the posterior aspect

