

lotoTM
PARTIAL KNEE SYSTEM



Specification Guide

Joint

Spine

Sports Med

INDEX

1	MOTO MEDIAL FEMORAL COMPONENT	4
2	MOTO MEDIAL TIBIAL INSERT	8
3	MOTO MEDIAL TIBIAL BASEPLATE	10
4	MOTO MEDIAL SIZE MATCHING	13

1. MOTO MEDIAL FEMORAL COMPONENT



MATERIAL: Co-Cr-Mo - ISO 5832-4
FIXATION: cemented

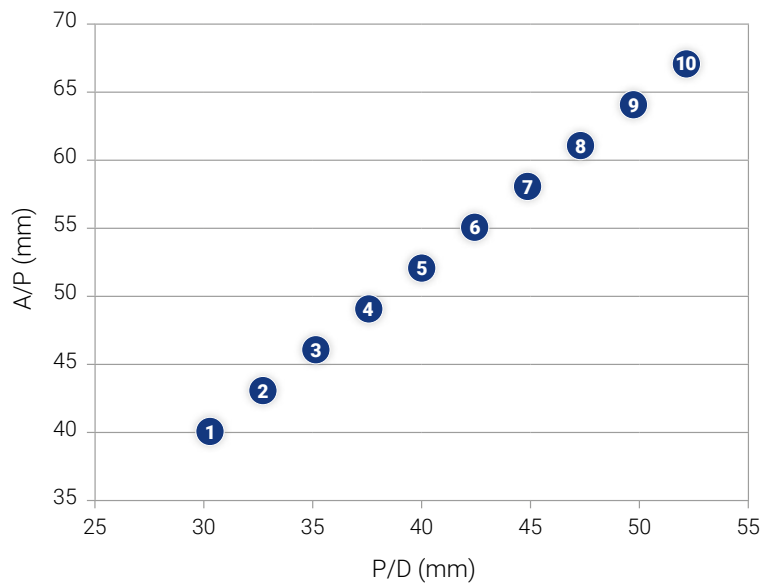
REFERENCES

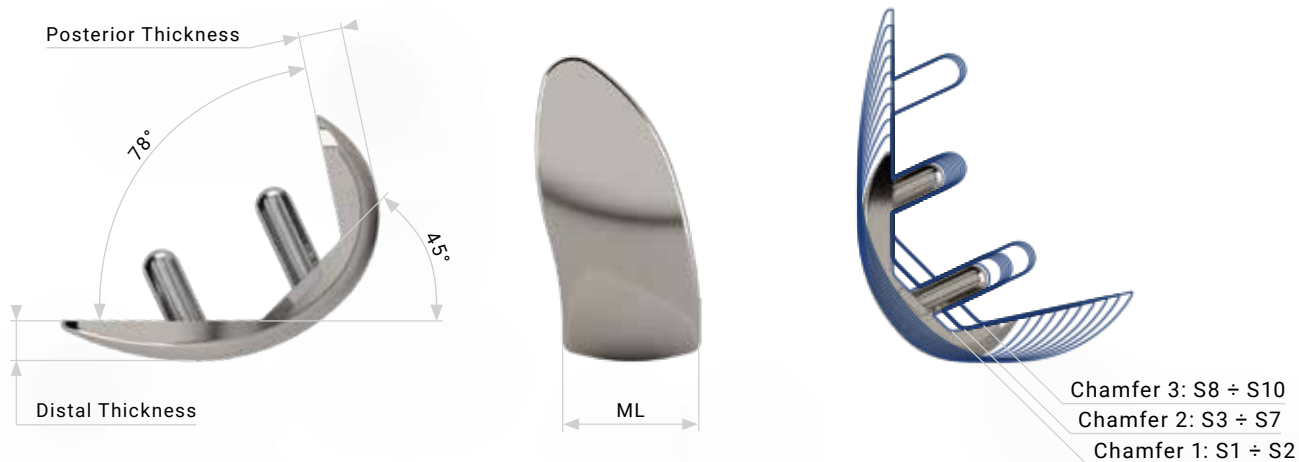
Left Medial Side	Size	Right Medial Side
02.18.001LM	1	02.18.001RM
02.18.002LM	2	02.18.002RM
02.18.003LM	3	02.18.003RM
02.18.004LM	4	02.18.004RM
02.18.005LM	5	02.18.005RM
02.18.006LM	6	02.18.006RM
02.18.007LM	7	02.18.007RM
02.18.008LM	8	02.18.008RM
02.18.009LM	9	02.18.009RM
02.18.010LM	10	02.18.010RM



DIMENSIONS

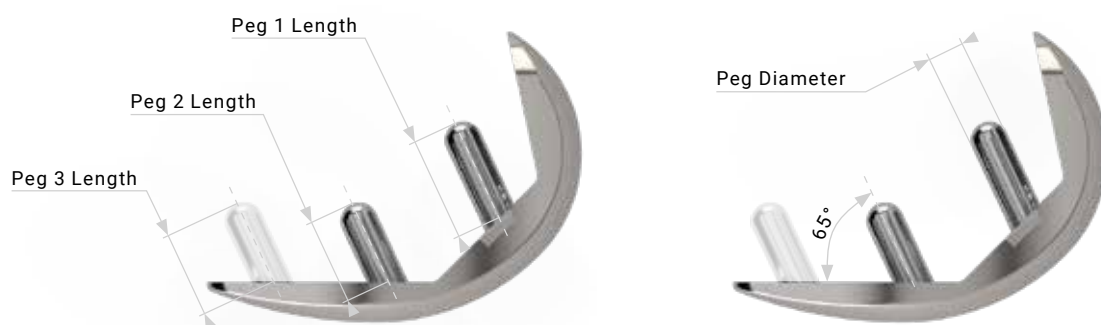
Size	A/P (mm)	P/D (mm)
1	40	30.5
2	43	32.5
3	46	35
4	49	37.5
5	52	40
6	55	42.5
7	58	45
8	61	47.5
9	64	50
10	67	52





DIMENSIONS

Size	M/L (mm)	Distal Thickness (mm)	Posterior Thickness (mm)	
1	19	6.5	6	Chamfer 1
2	20	6.5	6	
3	21	6.5	6.5	Chamfer 2
4	21.5	6.5	7	
5	22.5	6.5	7	
6	23	6.5	7.5	
7	24	6.5	7.5	Chamfer 3
8	25	6.5	8	
9	26	6.5	8.5	
10	26.5	6.5	9	



DIMENSIONS

Size	Peg Diameter (mm)	Peg 1 Length (mm)	Peg 2 Length (mm)	Peg 3 Length (mm)
1	6	13.5	10.5	/
2	6	14	11	/
3	6	14.5	11.5	/
4	6	15	12	/
5	6	15.5	12.5	/
6	6	16	13	/
7	6	16.5	13.5	/
8	6	17	14	14
9	6	17.5	14.5	14.5
10	6	18	15	15

2. MOTO MEDIAL TIBIAL INSERT



MATERIAL: UHMWPE - ISO 5834-2 Type 1

REFERENCES

Left Medial Side	Size	Label height	Right Medial Side
02.18.IF1.08.LM	1	8	02.18.IF1.08.RM
02.18.IF1.09.LM		9	02.18.IF1.09.RM
02.18.IF1.10.LM		10	02.18.IF1.10.RM
02.18.IF1.11.LM		11	02.18.IF1.11.RM
02.18.IF1.12.LM		12	02.18.IF1.12.RM
02.18.IF1.14.LM		14	02.18.IF1.14.RM
02.18.IF2.08.LM	2	8	02.18.IF2.08.RM
02.18.IF2.09.LM		9	02.18.IF2.09.RM
02.18.IF2.10.LM		10	02.18.IF2.10.RM
02.18.IF2.11.LM		11	02.18.IF2.11.RM
02.18.IF2.12.LM		12	02.18.IF2.12.RM
02.18.IF2.14.LM		14	02.18.IF2.14.RM
02.18.IF3.08.LM	3	8	02.18.IF3.08.RM
02.18.IF3.09.LM		9	02.18.IF3.09.RM
02.18.IF3.10.LM		10	02.18.IF3.10.RM
02.18.IF3.11.LM		11	02.18.IF3.11.RM
02.18.IF3.12.LM		12	02.18.IF3.12.RM
02.18.IF3.14.LM		14	02.18.IF3.14.RM
02.18.IF4.08.LM	4	8	02.18.IF4.08.RM
02.18.IF4.09.LM		9	02.18.IF4.09.RM
02.18.IF4.10.LM		10	02.18.IF4.10.RM
02.18.IF4.11.LM		11	02.18.IF4.11.RM
02.18.IF4.12.LM		12	02.18.IF4.12.RM
02.18.IF4.14.LM		14	02.18.IF4.14.RM

REFERENCES

Left Medial Side	Size	Label height	Right Medial Side
02.18.IF5.08.LM	5	8	02.18.IF5.08.RM
02.18.IF5.09.LM		9	02.18.IF5.09.RM
02.18.IF5.10.LM		10	02.18.IF5.10.RM
02.18.IF5.11.LM		11	02.18.IF5.11.RM
02.18.IF5.12.LM		12	02.18.IF5.12.RM
02.18.IF5.14.LM		14	02.18.IF5.14.RM
02.18.IF6.08.LM	6	8	02.18.IF6.08.RM
02.18.IF6.09.LM		9	02.18.IF6.09.RM
02.18.IF6.10.LM		10	02.18.IF6.10.RM
02.18.IF6.11.LM		11	02.18.IF6.11.RM
02.18.IF6.12.LM		12	02.18.IF6.12.RM
02.18.IF6.14.LM		14	02.18.IF6.14.RM
02.18.IF7.08.LM	7	8	02.18.IF7.08.RM
02.18.IF7.09.LM		9	02.18.IF7.09.RM
02.18.IF7.10.LM		10	02.18.IF7.10.RM
02.18.IF7.11.LM		11	02.18.IF7.11.RM
02.18.IF7.12.LM		12	02.18.IF7.12.RM
02.18.IF7.14.LM		14	02.18.IF7.14.RM
02.18.IF8.08.LM	8	8	02.18.IF8.08.RM
02.18.IF8.09.LM		9	02.18.IF8.09.RM
02.18.IF8.10.LM		10	02.18.IF8.10.RM
02.18.IF8.11.LM		11	02.18.IF8.11.RM
02.18.IF8.12.LM		12	02.18.IF8.12.RM
02.18.IF8.14.LM		14	02.18.IF8.14.RM



DIMENSIONS

Label Height	Tibial Total Thickness (mm)	Polyethylene Thickness (mm)
8	8.5	6
9	9.5	7
10	10.5	8
11	11.5	9
12	12.5	10
14	14.5	12



DIMENSIONS

Size	A/P (mm)	M/L (mm)
1	42.5	21
2	46	23.5
3	49.5	25.5
4	53	28
5	56.5	30
6	60	32.5
7	63.5	35
8	67	37

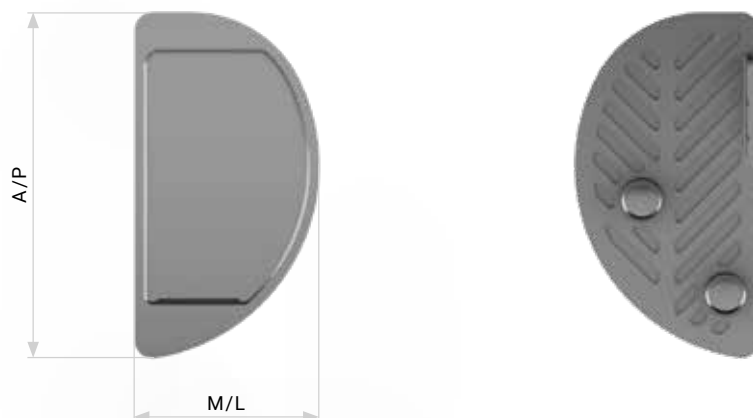
3. MOTO MEDIAL TIBIAL BASEPLATE



MATERIAL: Ti-6Al-4V - ISO 5832-3
FIXATION: cemented

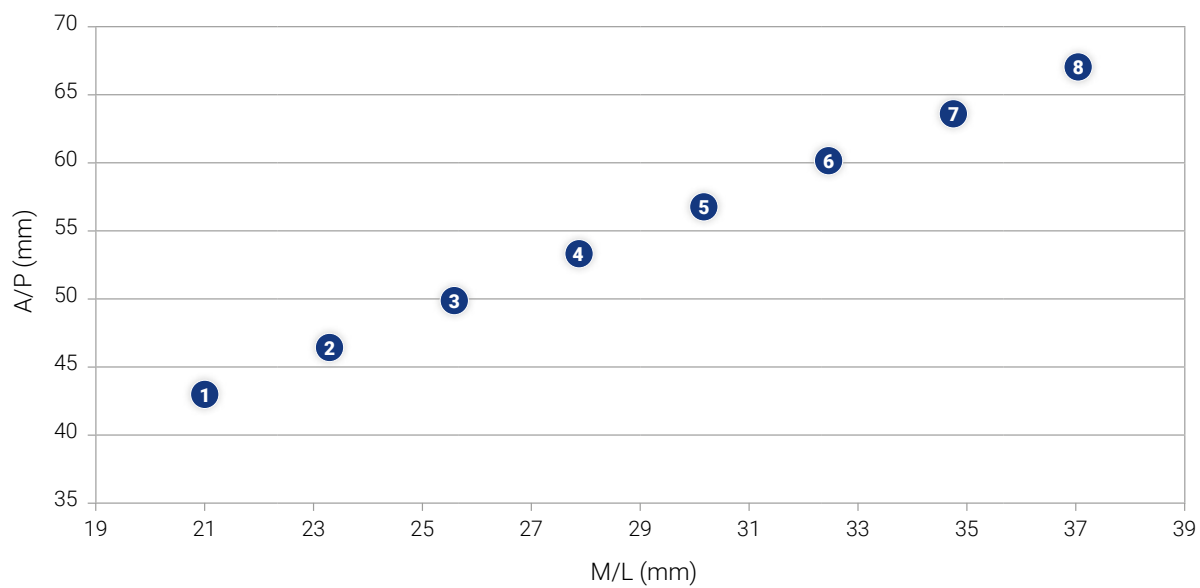
REFERENCES

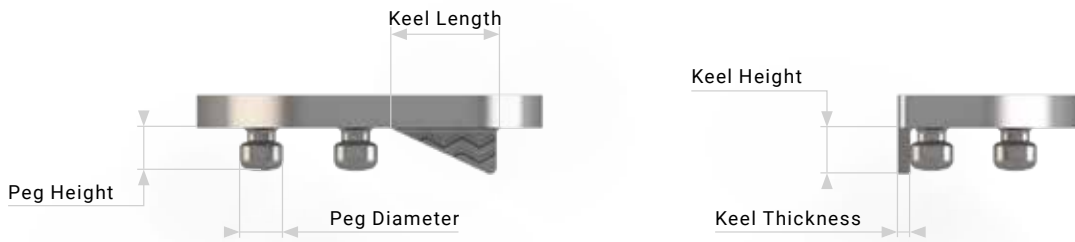
Left Medial Side	Size	Right Medial Side
02.18.TF1.LM	1	02.18.TF1.RM
02.18.TF2.LM	2	02.18.TF2.RM
02.18.TF3.LM	3	02.18.TF3.RM
02.18.TF4.LM	4	02.18.TF4.RM
02.18.TF5.LM	5	02.18.TF5.RM
02.18.TF6.LM	6	02.18.TF6.RM
02.18.TF7.LM	7	02.18.TF7.RM
02.18.TF8.LM	8	02.18.TF8.RM



DIMENSIONS

Size	A/P (mm)	M/L (mm)
1	42.5	21
2	46	23.5
3	49.5	25.5
4	53	28
5	56.5	30
6	60	32.5
7	63.5	35
8	67	37



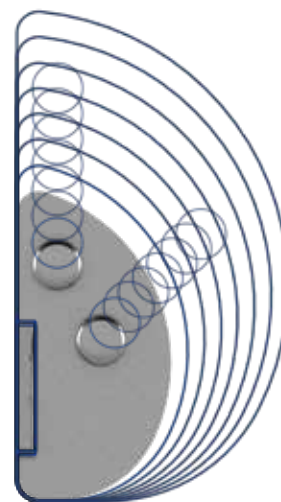


DIMENSIONS

Size	Keel Length (mm)	Keel Height (mm)	Keel Thickness (mm)
1	17.5	7.5	2
2	17.5	7.5	2
3	17.5	7.5	2
4	17.5	7.5	2
5	17.5	7.5	2
6	17.5	7.5	2
7	17.5	7.5	2
8	17.5	7.5	2

DIMENSIONS

Size	Peg Diameter (mm)	Peg Height (mm)
1	7	7
2	7	7
3	7	7
4	7	7
5	7	7
6	7	7
7	7	7
8	7	7



4. MOTO MEDIAL SIZE MATCHING

		Tibial Insert							
Size		1	2	3	4	5	6	7	8
Tibial Baseplate	1	✓							
	2		✓						
	3			✓					
	4				✓				
	5					✓			
	6						✓		
	7							✓	
	8								✓

Table 1: Matching capabilities for tibial inserts and tibial trays.

		Tibial Insert							
Size		1	2	3	4	5	6	7	8
Femoral Component	1	✓	✓	✓	✓	✓	✓	✓	✓
	2	✓	✓	✓	✓	✓	✓	✓	✓
	3	✓	✓	✓	✓	✓	✓	✓	✓
	4	✓	✓	✓	✓	✓	✓	✓	✓
	5	✓	✓	✓	✓	✓	✓	✓	✓
	6	✓	✓	✓	✓	✓	✓	✓	✓
	7	✓	✓	✓	✓	✓	✓	✓	✓
	8	✓	✓	✓	✓	✓	✓	✓	✓
	9	✓	✓	✓	✓	✓	✓	✓	✓
	10	✓	✓	✓	✓	✓	✓	✓	✓

Table 2: Matching capabilities for tibial inserts and femoral components.



**REDEFINING BETTER
IN ORTHOPAEDICS
AND NEUROSURGERY**

MEDACTA.COM



Medacta International SA
Strada Regina - 6874 Castel San Pietro - Switzerland
Phone +41 91 696 60 60 - Fax +41 91 696 60 66
info@medacta.ch

Find your local dealer at: medacta.com/locations

All trademarks and registered trademarks are the property of their respective owners.

MOTO™ Partial Knee System
Specification Guide

ref: 99.38Moto.11SG
rev. 01

Last update: March 2018