

loto[®] MEDIAL
PARTIAL KNEE SYSTEM



Specification Guide

Joint

Spine

Sports Med

INDEX

1. MOTO MEDIAL FEMORAL COMPONENT	4
2. MOTO MEDIAL TIBIAL INSERT	8
3. MOTO MEDIAL TIBIAL BASEPLATE	10
4. MOTO MEDIAL SIZE MATCHING	13

1. MOTO MEDIAL FEMORAL COMPONENT

REFERENCE NUMBERS



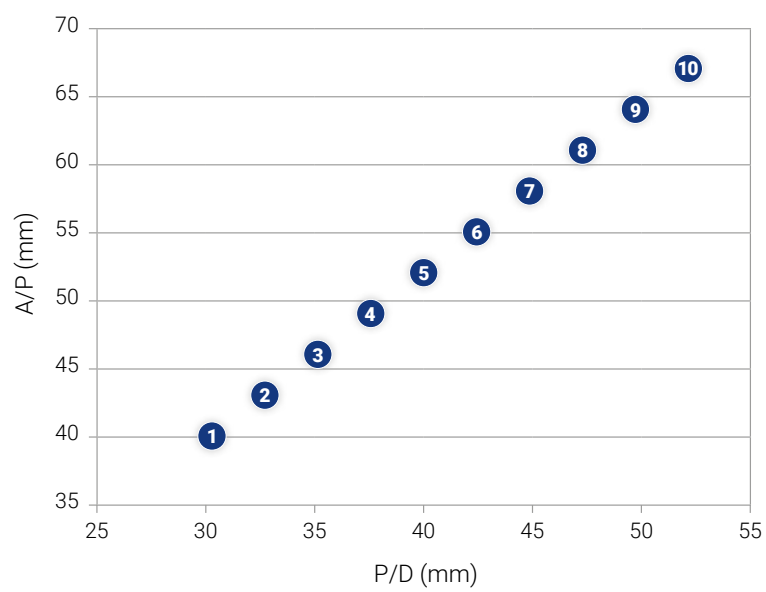
MATERIALS: CO-CR-MO - ISO 5832-4
FIXATION: CEMENTED

SIZE	LEFT SIDE	RIGHT SIDE
1	02.18.001LM	02.18.001RM
2	02.18.002LM	02.18.002RM
3	02.18.003LM	02.18.003RM
4	02.18.004LM	02.18.004RM
5	02.18.005LM	02.18.005RM
6	02.18.006LM	02.18.006RM
7	02.18.007LM	02.18.007RM
8	02.18.008LM	02.18.008RM
9	02.18.009LM	02.18.009RM
10	02.18.010LM	02.18.010RM

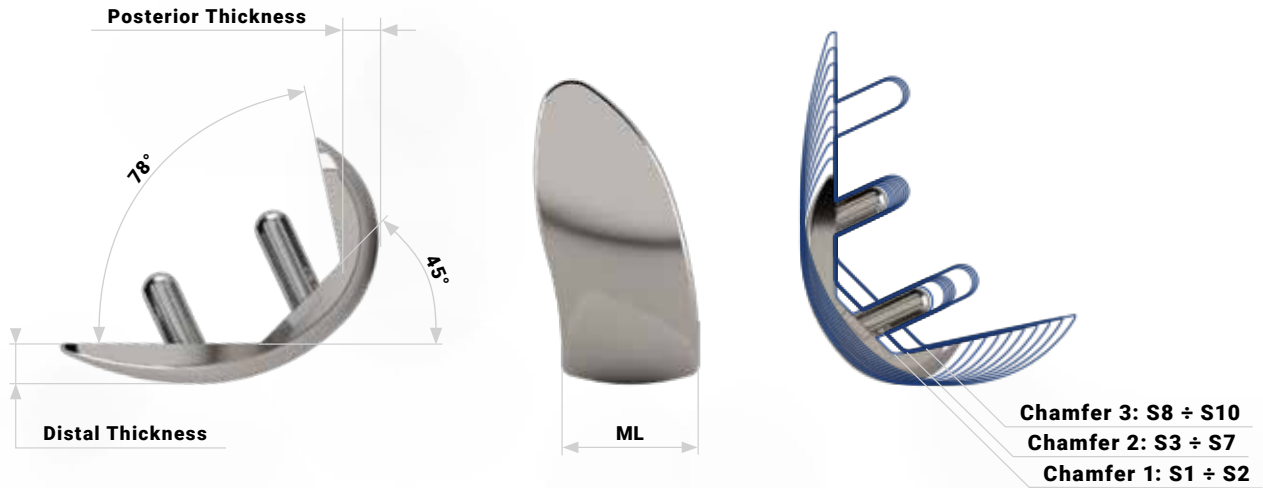
DIMENSIONS



SIZE	A/P (mm)	P/D (mm)
1	40	30.5
2	43	32.5
3	46	35
4	49	37.5
5	52	40
6	55	42.5
7	58	45
8	61	47.5
9	64	50
10	67	52

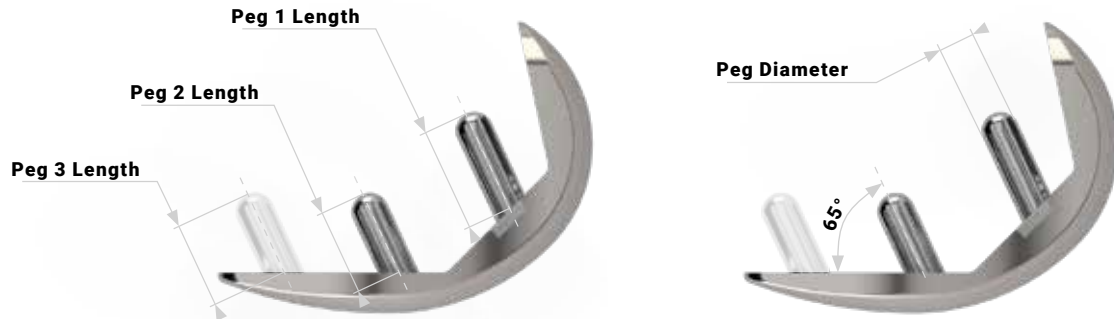


DIMENSIONS



SIZE	M/L (mm)	DISTAL THICKNESS (mm)	POSTERIOR THICKNESS (mm)	
1	19	6.5	5.5	Chamfer 1
2	20	6.5	5.5	
3	21	6.5	6	Chamfer 2
4	21.5	6.5	6	
5	22.5	6.5	6	
6	23	6.5	6	
7	24	6.5	6	Chamfer 3
8	25	6.5	7	
9	26	6.5	7	
10	26.5	6.5	7	

DIMENSIONS



SIZE	PEG DIAMETER (mm)	PEG 1 LENGHT (mm)	PEG 2 LENGHT (mm)	PEG 3 LENGHT (mm)
1	6	13.5	10.5	/
2	6	14	11	/
3	6	14.5	11.5	/
4	6	15	12	/
5	6	15.5	12.5	/
6	6	16	13	/
7	6	16.5	13.5	/
8	6	17	14	14
9	6	17.5	14.5	14.5
10	6	18	15	15

2. MOTO MEDIAL TIBIAL INSERT

REFERENCE NUMBERS



MATERIAL: UHMWPE - ISO 5834-2 TYPE 1

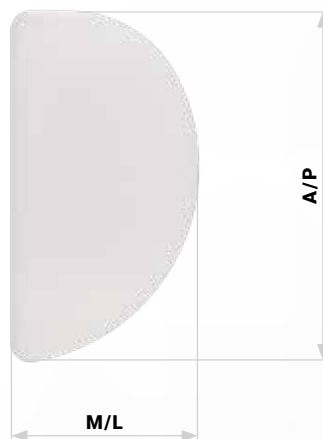
LEFT SIDE	SIZE	LABEL HEIGHT	RIGHT SIDE	LEFT SIDE	SIZE	LABEL HEIGHT	RIGHT SIDE
02.18.IF1.08.LM	1	8	02.18.IF1.08.RM	02.18.IF5.08.LM	5	8	02.18.IF5.08.RM
02.18.IF1.09.LM		9	02.18.IF1.09.RM	02.18.IF5.09.LM		9	02.18.IF5.09.RM
02.18.IF1.10.LM		10	02.18.IF1.10.RM	02.18.IF5.10.LM		10	02.18.IF5.10.RM
02.18.IF1.11.LM		11	02.18.IF1.11.RM	02.18.IF5.11.LM		11	02.18.IF5.11.RM
02.18.IF1.12.LM		12	02.18.IF1.12.RM	02.18.IF5.12.LM		12	02.18.IF5.12.RM
02.18.IF1.14.LM		14	02.18.IF1.14.RM	02.18.IF5.14.LM		14	02.18.IF5.14.RM
02.18.IF2.08.LM	2	8	02.18.IF2.08.RM	02.18.IF6.08.LM	6	8	02.18.IF6.08.RM
02.18.IF2.09.LM		9	02.18.IF2.09.RM	02.18.IF6.09.LM		9	02.18.IF6.09.RM
02.18.IF2.10.LM		10	02.18.IF2.10.RM	02.18.IF6.10.LM		10	02.18.IF6.10.RM
02.18.IF2.11.LM		11	02.18.IF2.11.RM	02.18.IF6.11.LM		11	02.18.IF6.11.RM
02.18.IF2.12.LM		12	02.18.IF2.12.RM	02.18.IF6.12.LM		12	02.18.IF6.12.RM
02.18.IF2.14.LM		14	02.18.IF2.14.RM	02.18.IF6.14.LM		14	02.18.IF6.14.RM
02.18.IF3.08.LM	3	8	02.18.IF3.08.RM	02.18.IF7.08.LM	7	8	02.18.IF7.08.RM
02.18.IF3.09.LM		9	02.18.IF3.09.RM	02.18.IF7.09.LM		9	02.18.IF7.09.RM
02.18.IF3.10.LM		10	02.18.IF3.10.RM	02.18.IF7.10.LM		10	02.18.IF7.10.RM
02.18.IF3.11.LM		11	02.18.IF3.11.RM	02.18.IF7.11.LM		11	02.18.IF7.11.RM
02.18.IF3.12.LM		12	02.18.IF3.12.RM	02.18.IF7.12.LM		12	02.18.IF7.12.RM
02.18.IF3.14.LM		14	02.18.IF3.14.RM	02.18.IF7.14.LM		14	02.18.IF7.14.RM
02.18.IF4.08.LM	4	8	02.18.IF4.08.RM	02.18.IF8.08.LM	8	8	02.18.IF8.08.RM
02.18.IF4.09.LM		9	02.18.IF4.09.RM	02.18.IF8.09.LM		9	02.18.IF8.09.RM
02.18.IF4.10.LM		10	02.18.IF4.10.RM	02.18.IF8.10.LM		10	02.18.IF8.10.RM
02.18.IF4.11.LM		11	02.18.IF4.11.RM	02.18.IF8.11.LM		11	02.18.IF8.11.RM
02.18.IF4.12.LM		12	02.18.IF4.12.RM	02.18.IF8.12.LM		12	02.18.IF8.12.RM
02.18.IF4.14.LM		14	02.18.IF4.14.RM	02.18.IF8.14.LM		14	02.18.IF8.14.RM

DIMENSIONS



LABEL HEIGHT	TIBIAL TOTAL THICKNESS (mm)	POLYETHYLENE THICKNESS (mm)
8	8.5	6
9	9.5	7
10	10.5	8
11	11.5	9
12	12.5	10
14	14.5	12

DIMENSIONS



Size	A/P (mm)	M/L (mm)
1	42.5	21
2	46	23.5
3	49.5	25.5
4	53	28
5	56.5	30
6	60	32.5
7	63.5	35
8	67	37

3. MOTO MEDIAL TIBIAL BASEPLATE

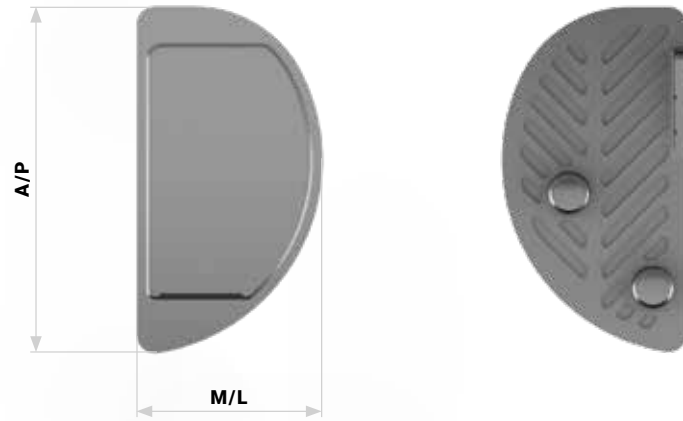
REFERENCE NUMBERS



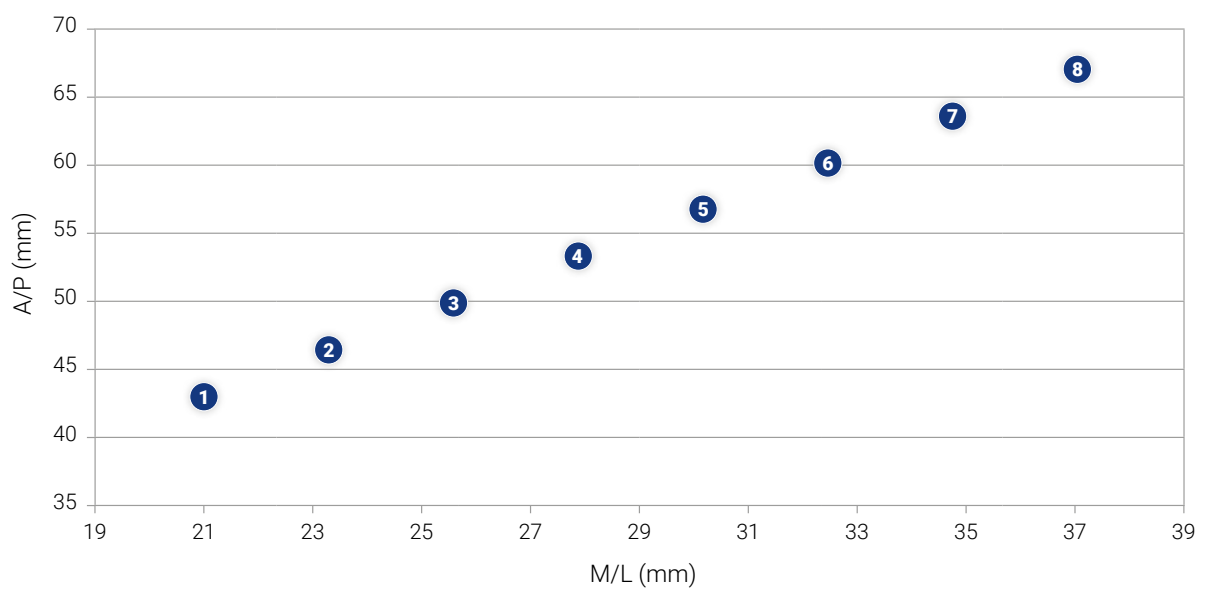
MATERIAL: Ti-6Al-4V - ISO 5832-3
FIXATION: cemented

LEFT MEDIAL SIDE	SIZE	RIGHT MEDIAL SIDE
02.18.TF1.LM	1	02.18.TF1.RM
02.18.TF2.LM	2	02.18.TF2.RM
02.18.TF3.LM	3	02.18.TF3.RM
02.18.TF4.LM	4	02.18.TF4.RM
02.18.TF5.LM	5	02.18.TF5.RM
02.18.TF6.LM	6	02.18.TF6.RM
02.18.TF7.LM	7	02.18.TF7.RM
02.18.TF8.LM	8	02.18.TF8.RM

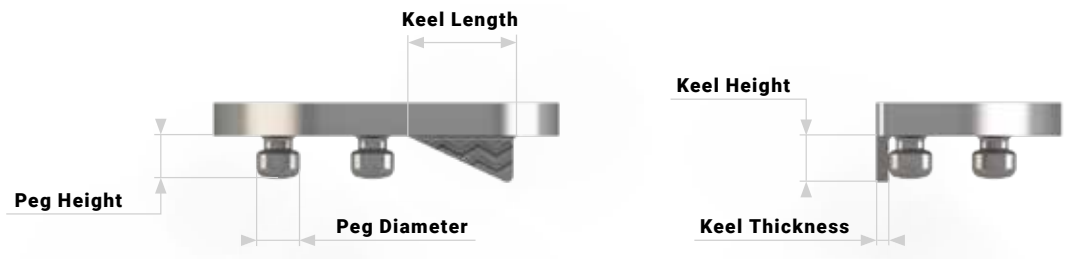
DIMENSIONS



SIZE	A/P (mm)	M/L (mm)
1	42.5	21
2	46	23.5
3	49.5	25.5
4	53	28
5	56.5	30
6	60	32.5
7	63.5	35
8	67	37

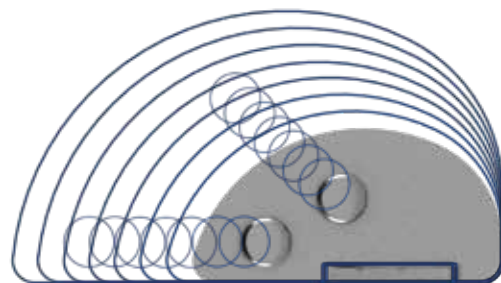


DIMENSIONS



SIZE	KEEL LENGHT (mm)	KEEL HEIGHT (mm)	KEEL THICKNESS (mm)
1	17.5	7.5	2
2	17.5	7.5	2
3	17.5	7.5	2
4	17.5	7.5	2
5	17.5	7.5	2
6	17.5	7.5	2
7	17.5	7.5	2
8	17.5	7.5	2

DIMENSIONS



SIZE	PEG DIAMETER (mm)	PEG HEIGHT (mm)
1	7	7
2	7	7
3	7	7
4	7	7
5	7	7
6	7	7
7	7	7
8	7	7

4. MOTO MEDIAL SIZE MATCHING

		TIBIAL INSERT							
Size		1	2	3	4	5	6	7	8
TIBIAL BASEPLATE	1	✓							
	2		✓						
	3			✓					
	4				✓				
	5					✓			
	6						✓		
	7							✓	
	8								✓

Table 1: Matching capabilities for tibial inserts and tibial trays.

		TIBIAL INSERT							
Size		1	2	3	4	5	6	7	8
FEMORAL COMPONENT	1	✓	✓	✓	✓	✓	✓	✓	✓
	2	✓	✓	✓	✓	✓	✓	✓	✓
	3	✓	✓	✓	✓	✓	✓	✓	✓
	4	✓	✓	✓	✓	✓	✓	✓	✓
	5	✓	✓	✓	✓	✓	✓	✓	✓
	6	✓	✓	✓	✓	✓	✓	✓	✓
	7	✓	✓	✓	✓	✓	✓	✓	✓
	8	✓	✓	✓	✓	✓	✓	✓	✓
	9	✓	✓	✓	✓	✓	✓	✓	✓
	10	✓	✓	✓	✓	✓	✓	✓	✓

Table 2: Matching capabilities for tibial inserts and femoral components.



**REDEFINING BETTER
IN ORTHOPAEDICS
AND SPINE SURGERY**

MEDACTA.COM



Medacta International SA
Strada Regina - 6874 Castel San Pietro - Switzerland
Phone +41 91 696 60 60 - Fax +41 91 696 60 66
info@medacta.ch

Find your local dealer at: [medacta.com/locations](https://www.medacta.com/locations)

All trademarks and registered trademarks are the property of their respective owners.
This document is not intended for the US market.
Please verify approval of the devices described in this document with your local Medacta representative.

MOTO® Medial
Specification Guide

ref: 99.38MOTO.11SG
rev. 02

Last update: February 2020
CE 0476