



SOFTWARE MANAGEMENT

USER MANUAL

CAUTION: Federal law (USA) restricts this device to sale by or on the order of physician

Distributed by MEDACTA USA, Inc, 4725 Calle Quetzal Unit B Camarillo, CA 93012-9101
1 (800) 901-7836.

TABLE OF CONTENTS

1. PRELIMINARY REMARKS	4
2. SET UP REQUIRED	5
3. HOW TO USE THIS MANUAL.....	6
4. BACK UP PROCEDURE	7
5. UNINSTALLATION PROCEDURE.....	13
6. INSTALLATION PROCEDURE.....	17
7. NAVIGATION START UP.....	23
APPENDIX – iMAC KEYS	27

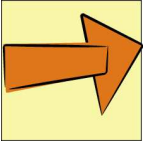


FOR INTERNAL USE ONLY

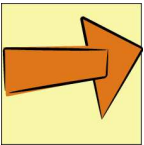
1. PRELIMINARY REMARKS

In order to install a new software version these items are required:

- Installation CD
- License code.

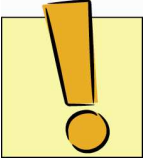


NOTICE: The license code is associated to the navigator serial number, the software reference number and the software version reference number. The code can be supplied only by Medacta International.



NOTICE: If a back up of some existing data is required, it is necessary to have also a USB mouse and an adequate support on which save the data (CD, DVD, USB key).

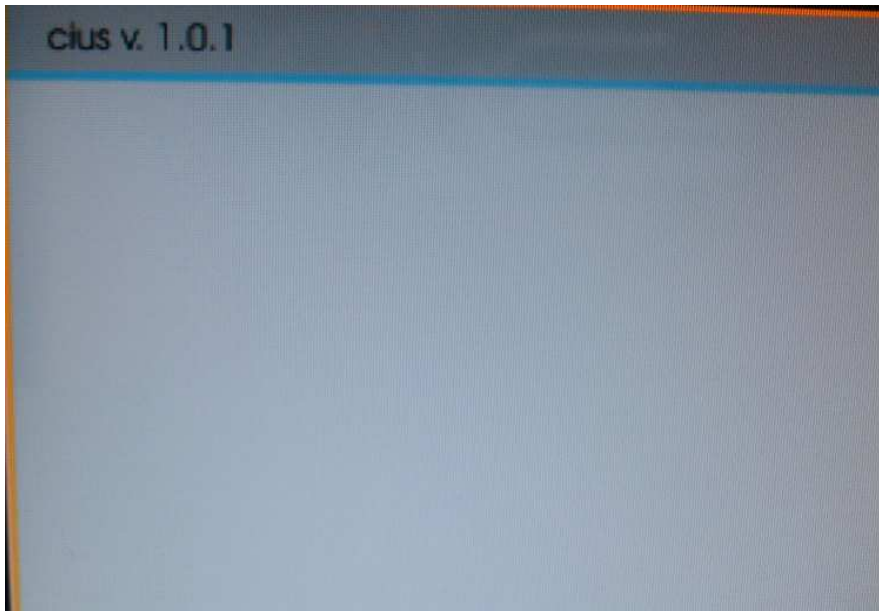
2. SET UP REQUIRED



CAUTION: To be compatible with the installation CD received, make sure that the navigator system is equipped with Linux Operative System and Application Manager (Installer).

To perform this check, start up the navigator and make the login by typing in:
USERNAME: “medacta” (without quotation marks) then press “ENTER” key
PASSWORD: “medacta” (without quotation marks) then press “ENTER” key.

The system version is correct if, after the starting up of the system, the expression “CIUS v. 1.0.1” will appear on screen (Pic. 1).



Pic. 1

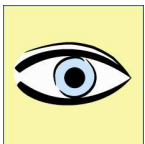
In case the expression is different, please contact Medacta technical assistance.

After doing this check, please shut down the navigator and choose the procedure required as described in par. 3.

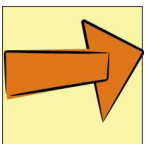
3. HOW TO USE THIS MANUAL

The following table illustrates all the possible situations and the related steps to follow:

WHAT DO YOU NEED TO DO?	MANUAL	TIME ESTIMATED
Backup of the previous sessions data	p. 7, 8, 9, 10, 11, 12, 13	depending on the amount of data to be saved
Uninstalling a software	p. 13, 14, 15, 16, 17	15 minutes
Uninstalling a software with backup of the previous sessions data	p. 7, 8, 9, 10, 11, 12, 13, 14, 15, 16, 17	15 minutes + time depending on the amount of data to be saved
Installing a new software	p. 17, 18, 19, 20, 21, 22, 23	15 minutes
Installing a new software and uninstalling the previous version	p. 13, 14, 15, 16, 17, 18, 19, 20, 21, 22, 23	30 minutes
Installing a new software, uninstalling the previous version and backup of the previous sessions data	p. 7, 8, 9, 10, 11, 12, 13, 14, 15, 16, 17, 18, 19, 20, 21, 22, 23	30 minutes + time depending on the amount of data to be saved



OPTION: After every operation listed in the table above, it is possible to start a new navigation session. For the detailed procedure, please follow the steps described in par.7.



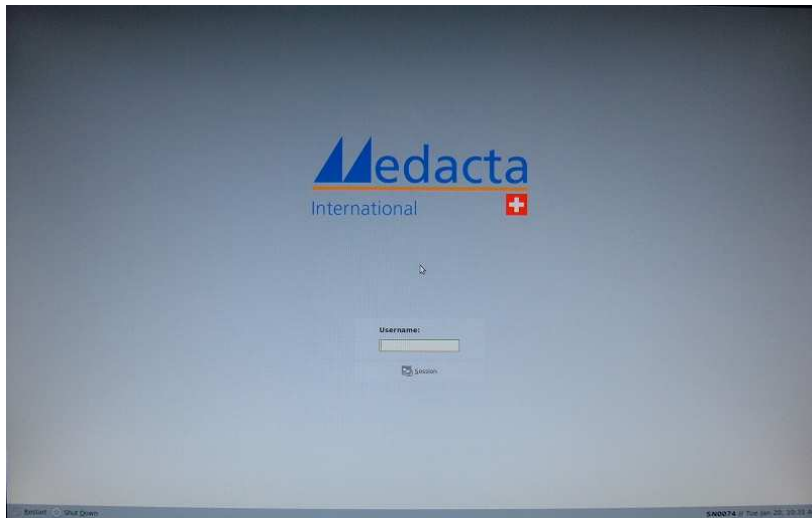
NOTICE: Please note that the screenshots reported in this manual are not intended to be exhaustive but only indicative.

4. BACK UP PROCEDURE



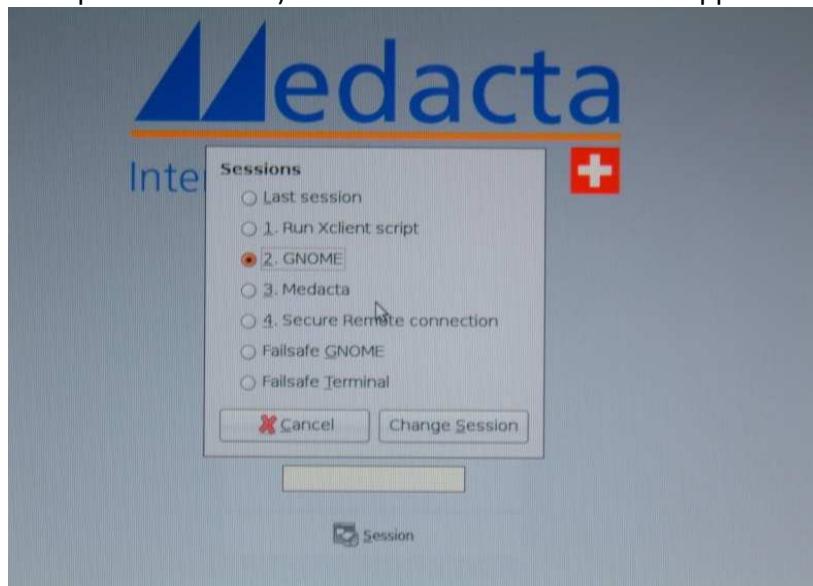
TIP: It is advisable to perform the back up before proceeding with the uninstallation of a software version.

Switch on the navigator and connect the USB mouse to a USB port on the keyboard or on the iMAC. The system starts with a screenshot like Pic. 2:



Pic. 2

Press "ALT+S" (without quotation marks) and the menu like in Pic. 3 will appear:



Pic. 3

Once the menu is open, go to the “GNOME” option by using up/down arrows. Pressing again “ALT+S” (without quotation marks), the screenshot like in Pic. 2 will appear again.

Now make the login by typing in:

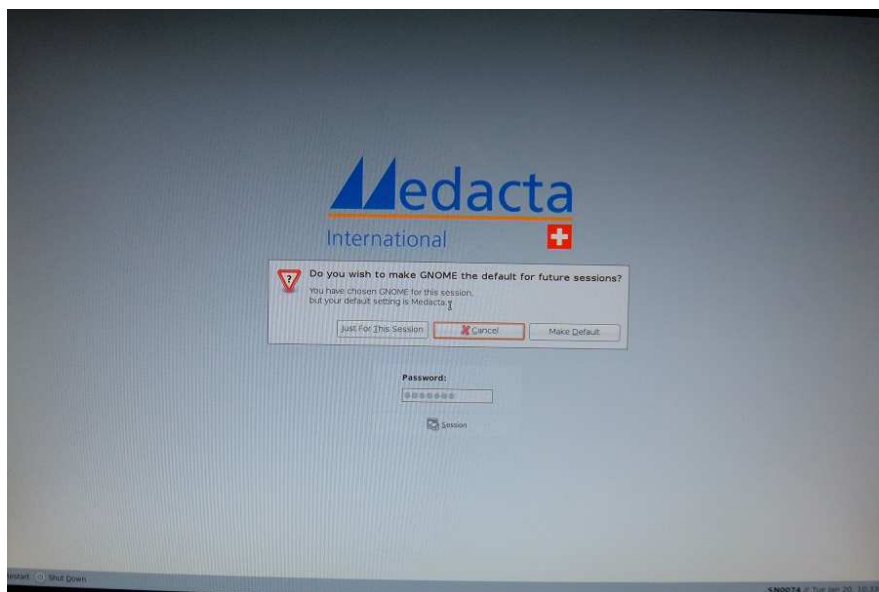
USERNAME: “medacta” (without quotation marks) then press



PASSWORD: “medacta” (without quotation marks) then press



The screenshot in Pic. 4 appears:

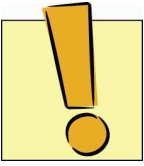


Pic. 4

Using the left/right arrows, go to the “Just for this session” option and press

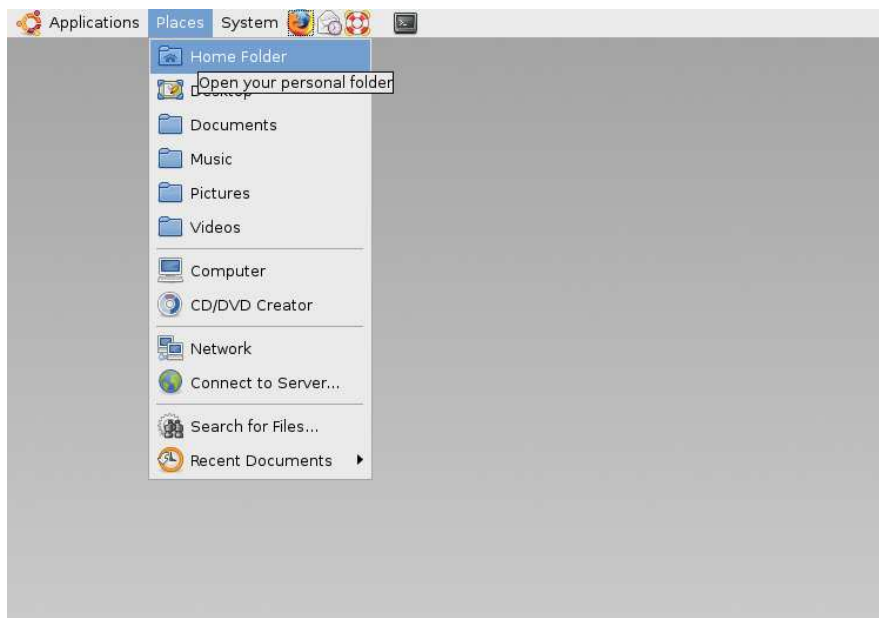


to gain access to the iMAC desktop.



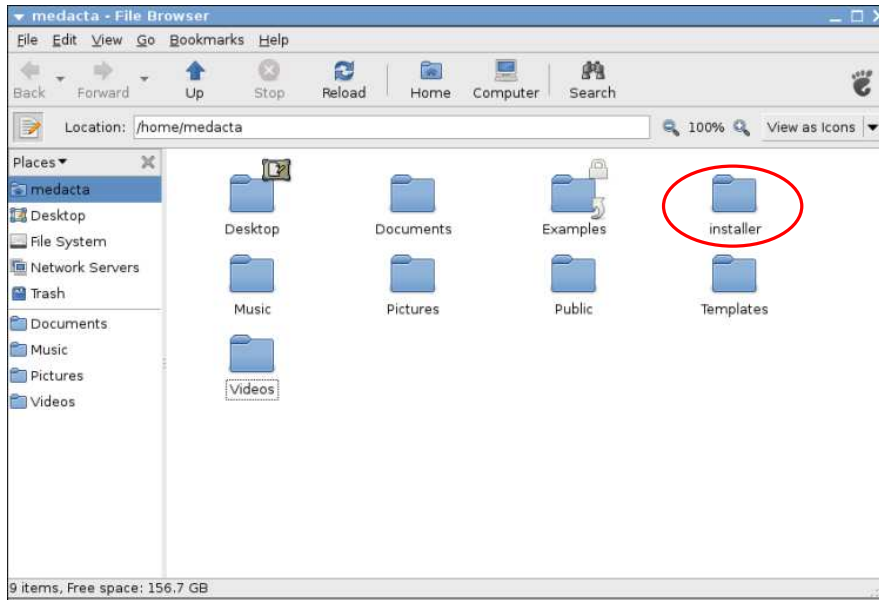
CAUTION: It is important to remind this step otherwise when the navigator will be rebooted to perform a navigation session, it will not start with the correct user profile.

Once on the desktop, by using the mouse select on the horizontal tool bar on the left, “Places” and then “Home folder” (Pic. 5):



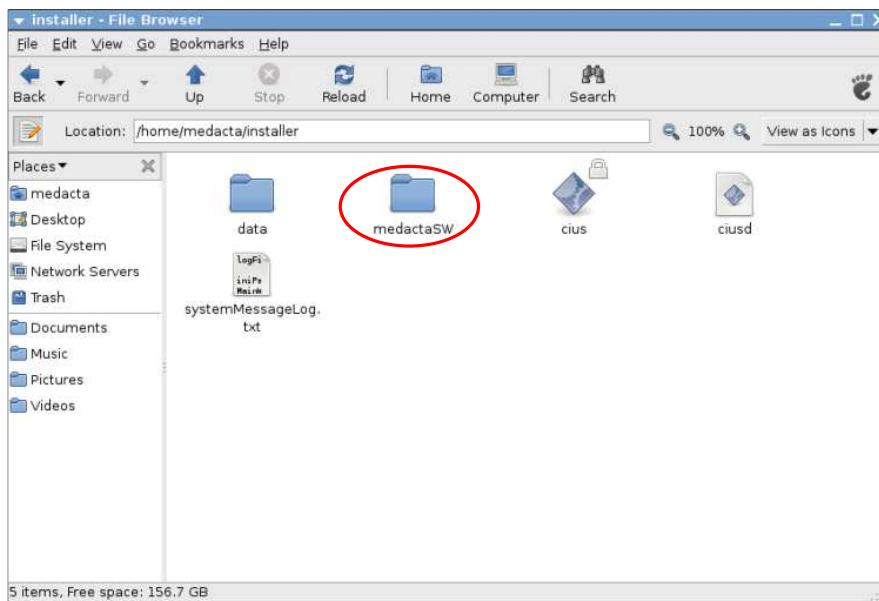
Pic. 5

The screenshot shown in Pic. 6 will appear:



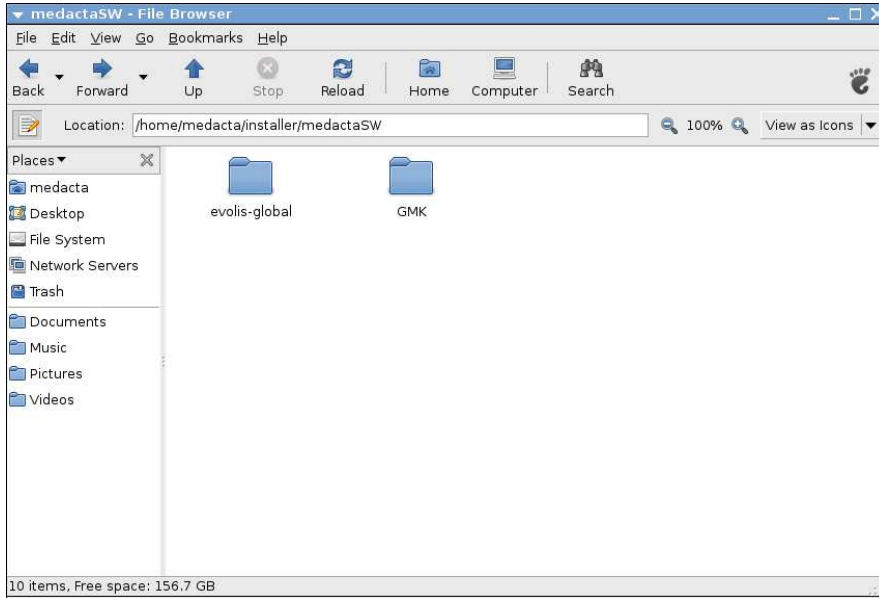
Pic. 6

By double clicking with left mouse key on the "installer" folder, the screenshot shown in Pic. 7 appears:



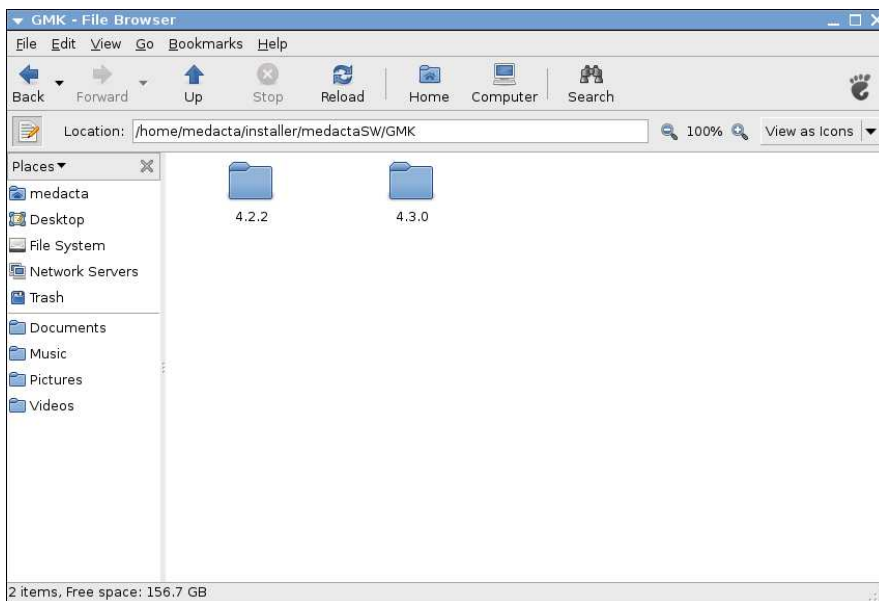
Pic. 7

By double clicking with left mouse key on the “medactaSW” folder, a screenshot appears where all applications at present installed on the navigator are shown (Pic. 8):



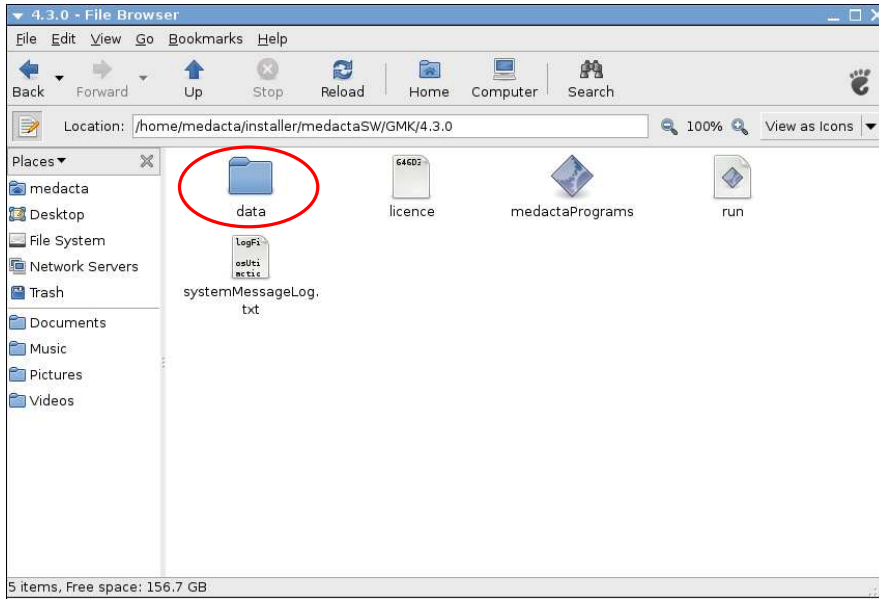
Pic. 8

By double clicking with left mouse key on the application folder to be backed up, a screenshot appears where all the versions at present available for that application are shown (Pic. 9):



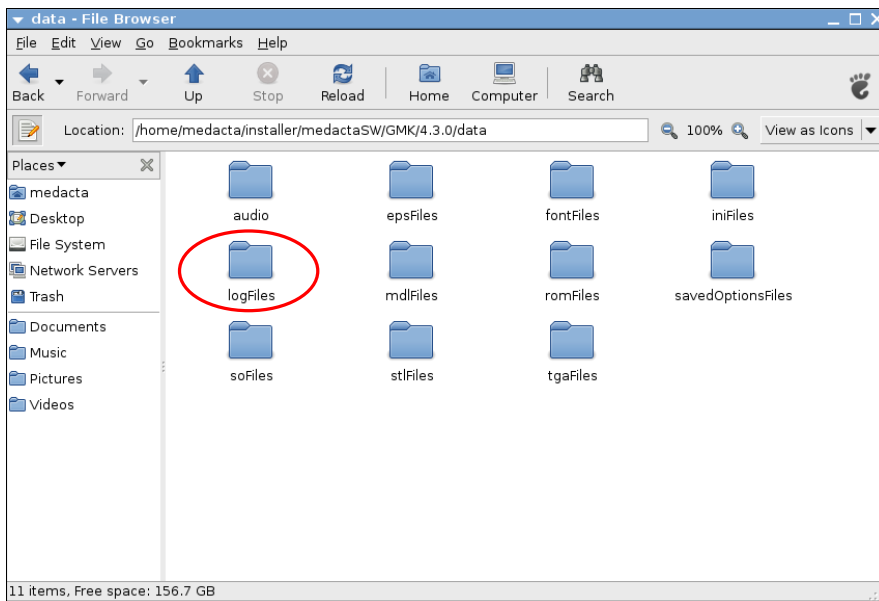
Pic. 9

By double clicking with left mouse key on any software version folder, a screenshot appear (Pic. 10):



Pic. 10

By double clicking with left mouse key on the “data” folder, a screenshot appears (Pic. 11):



Pic. 11

“logFiles” folder contains several sub-folders, each one containing reports and screenshots acquired during every surgery performed with the software version selected.

Insert the media support (USB, CD, DVD) on which the back up will be saved. When the device is ready to be used, an icon will appear on the desktop.


- USB key storage: click with right mouse key on the “logFiles” folder and select “copy”. Double click with left mouse key on USB key icon on the desktop: a window will appear, click with right mouse key on that window, selecting “Paste”.
- CD/DVD storage: double click with left mouse key on the CD/DVD icon on the desktop, a window will appear: drag and drop the “logFiles” folder into that window and click on the screen the “Write to disc” option.

In both cases, data transfer may require a time depending on the amount of data to be transferred.

To conclude the backup procedure follow these steps:

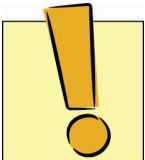
- close the open window



- click on the button  on the desktop
- select the option “Shut down” to turn off the system or “Restart” to restart the system.

The system will restart from the screenshot represented in Pic. 2.

5. UNINSTALLATION PROCEDURE



CAUTION: Before uninstalling any software version, it may be advisable to do a previous session data backup (see par. 4).


To uninstall an application, start up the navigator and make the login by typing in:
USERNAME: “medacta” (without quotation marks) then press



PASSWORD: “medacta” (without quotation marks) then press






After Application Manager started (Pic. 12), press  to get access to management options:




Pic. 12

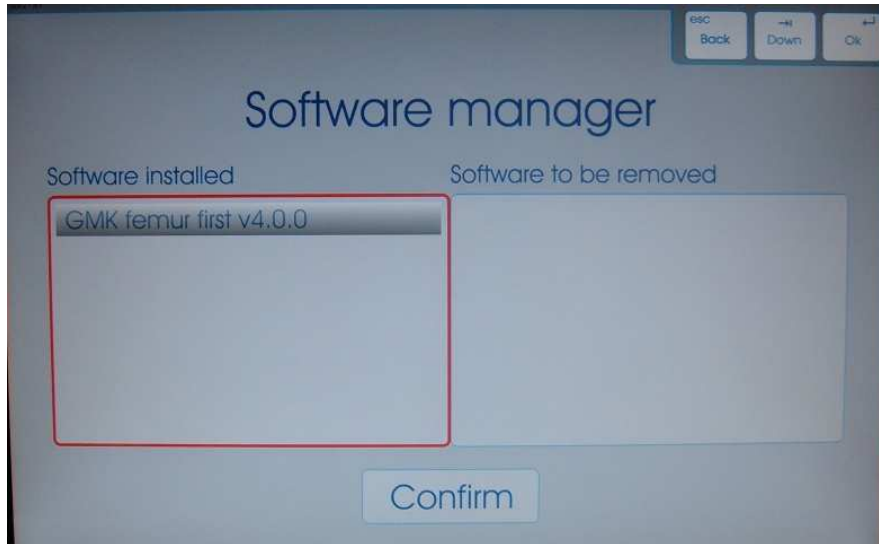


By using  select "Uninstall" (Pic. 13):





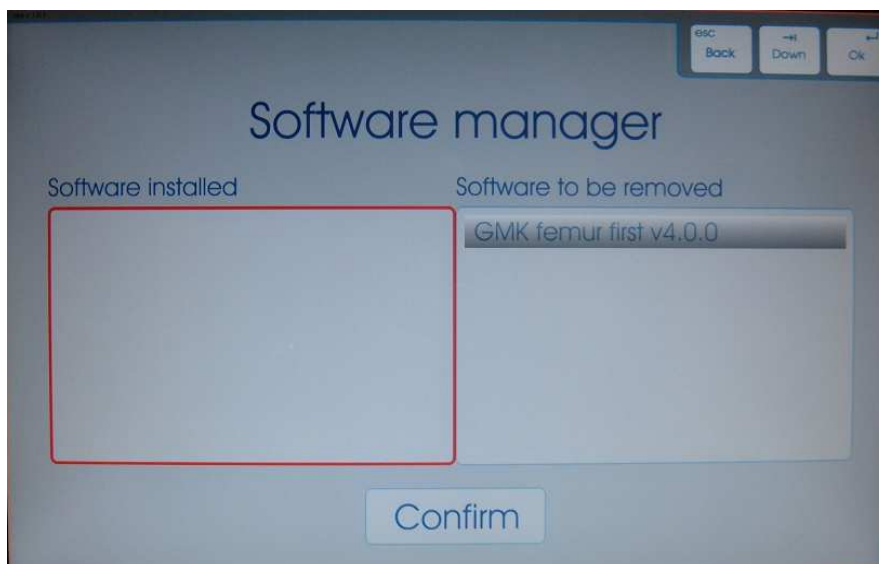
Pic. 13

Press  and a screenshot appears (PIC. 14):

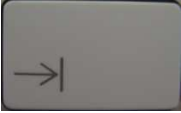



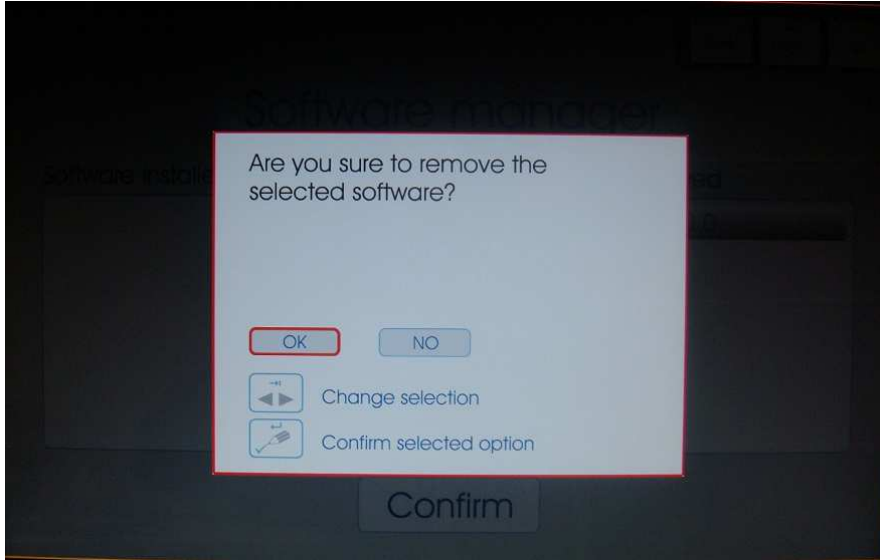
Pic. 14

By using  select the software version to remove, then press  and a screenshot appears (Pic.15):





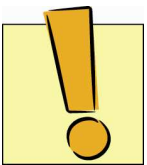
Pic. 15

Press  twice, until the “Confirm” button on screen is selected, then press . A screenshot will appear (Pic. 16):



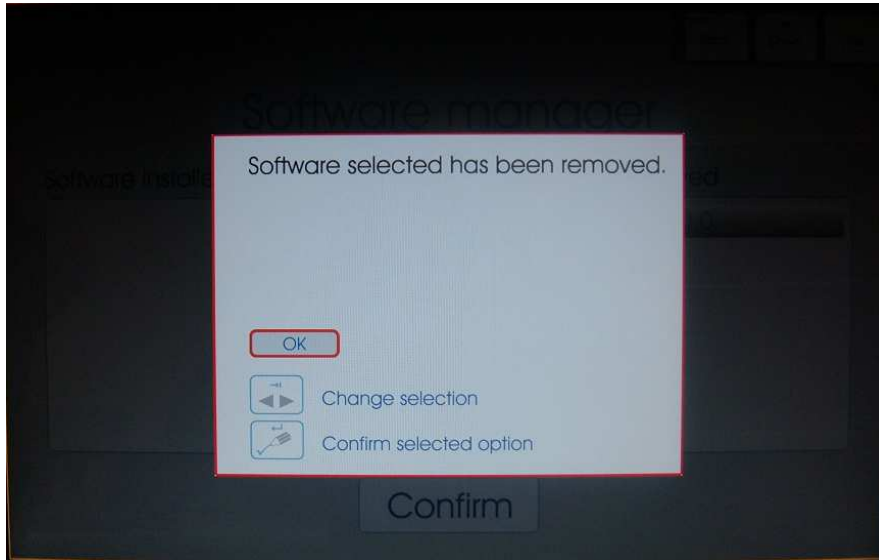
Pic. 16

By using the  go to the “OK” option and press  to definitely remove the application.




CAUTION: After this step it will not be possible to recover any data from the deleted version and a dedicated CD will be required to reinstall it.

After few seconds, a screenshot will appear (Pic. 17), announcing that the application has been definitely removed:



Pic. 17



Press  to conclude the uninstallation session.

The system will go back to Pic. 12 (Starting the navigation session).

6. INSTALLATION PROCEDURE


To install a new application, start up the navigator and make the login by typing in:
USERNAME: "medacta" (without quotation marks) then press



PASSWORD: "medacta" (without quotation marks) then press





After Application Manager started (Pic. 18), press  to get access to management options:




Pic. 18

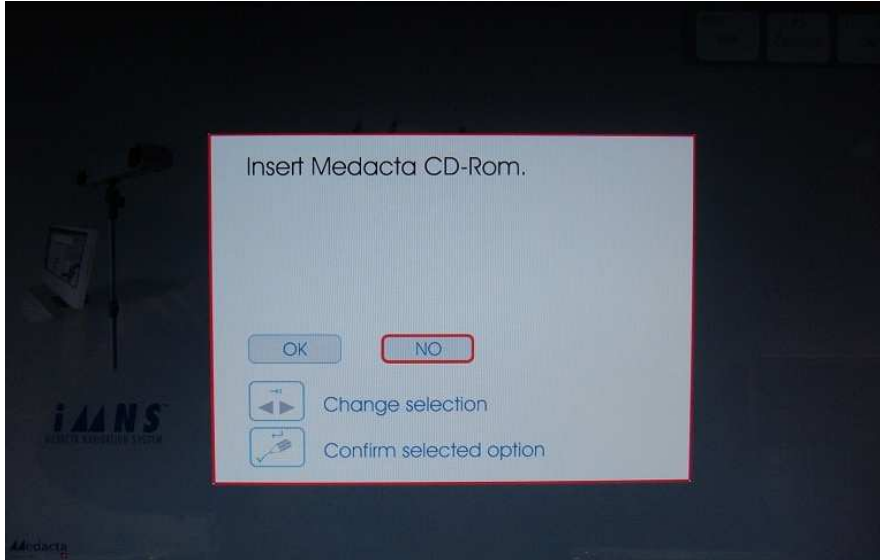


By using  select "Install", then press

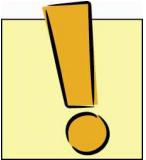


When the corresponding screenshot appears (Pic.19), insert the CD-ROM and after few seconds select

“OK” by using 



Pic. 19

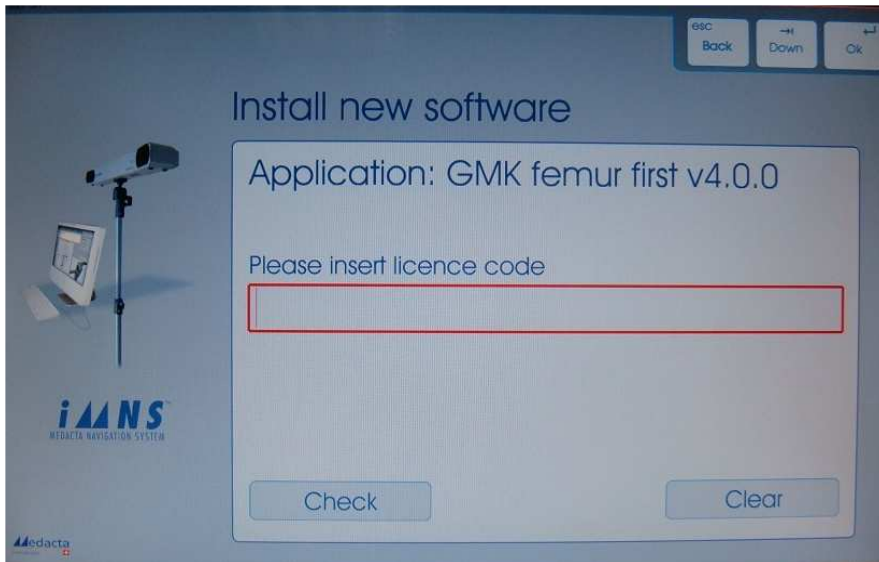


NOTICE: Do not insert the installation CD in the iMAC slot until the Pic. 19 appears otherwise the CD will not be read by the system and rejected.

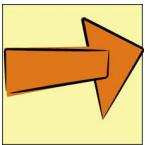


Once the CD has been properly inserted, press

and the license code will be required (Pic.20):



Pic. 20



NOTICE: The license code is an alphanumeric string specific to every single navigator and every software version. Make sure to have it together with the installation CD, otherwise quit the installation.

Type in the alphanumeric code, paying attention to blank spaces, then by using

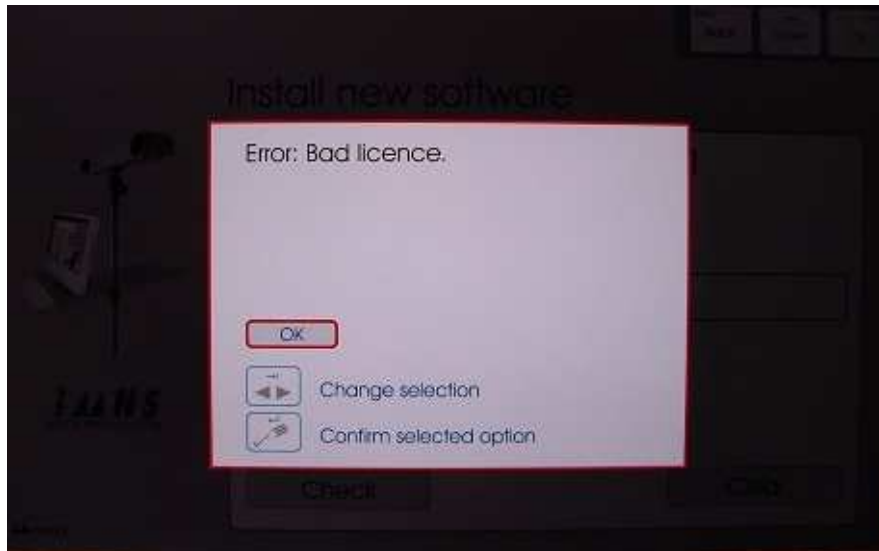


select "CHECK" and finally press







Please note that license code is NOT case sensitive so characters can be typed in using lower case only. Example: the code 123ab456cd789 will be seen exactly the same as 123AB456CD789.

If the license code is incorrect, the message “error: bad license” (Pic. 21) appears on screen.



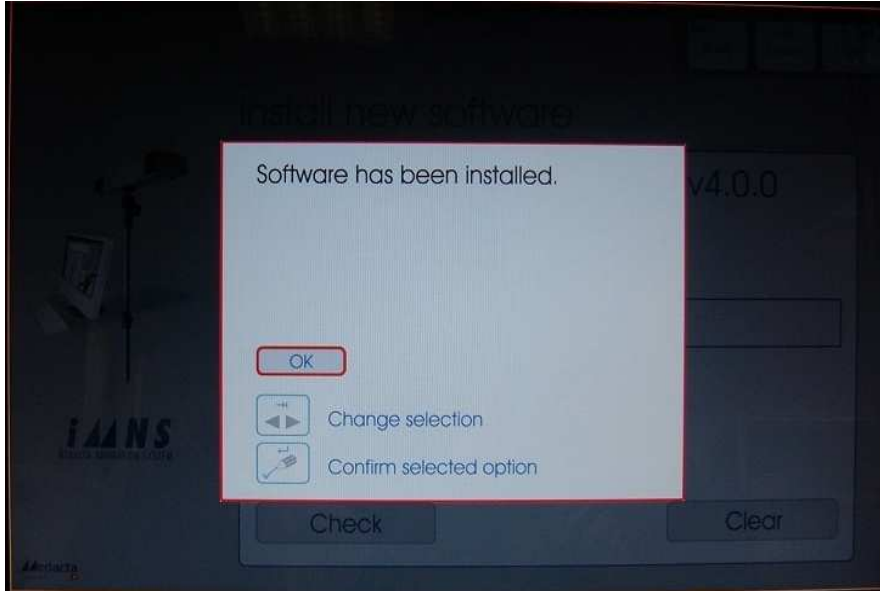
Pic. 21

To correct the code, please follow this steps:

- press  to move to “Clear” option
- press  to confirm
- re-type in the correct code
- press  and  to check the new code.


If the license code is correct, wait some minutes for the software to be installed: during this operation the message “PLEASE WAIT” appears on screen.

Once the installation has been completed, the CD will automatically be ejected and a screenshot announcing the end of the installation appears (Pic.22):



Pic. 22





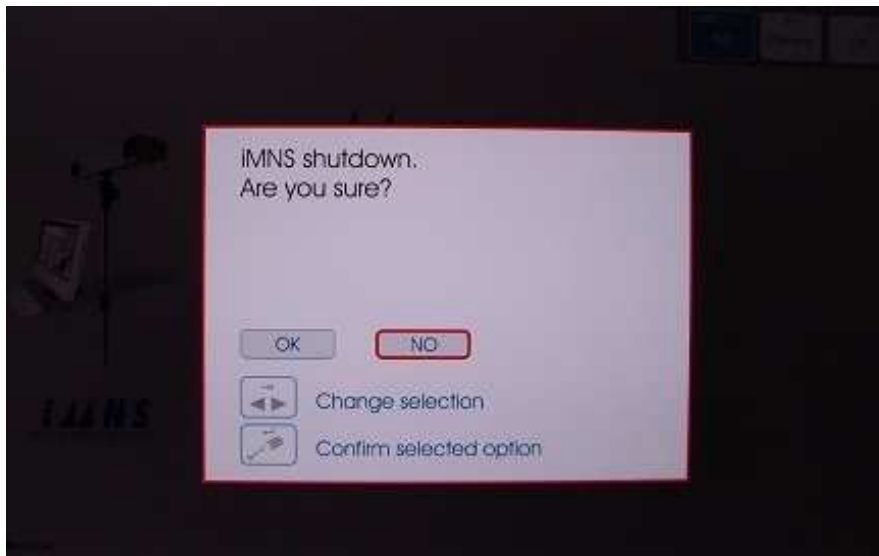
Select "OK" and press  to get access to the navigation start up screenshot (Pic. 23):



Pic. 23

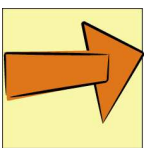
Once the installation is completed, press  to shut down the system.

The screenshot in Pic. 24 appears: press  and  to confirm the choice.



Pic. 24

7. NAVIGATION START UP



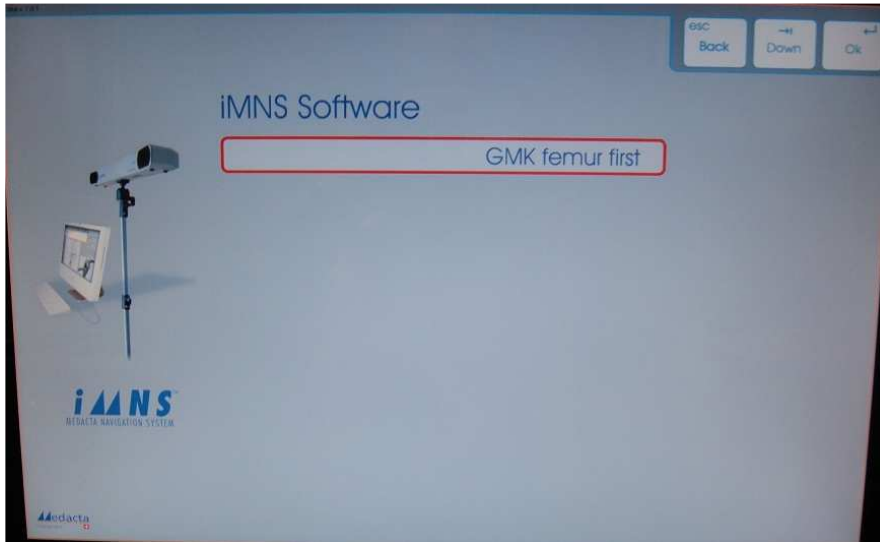
NOTICE: To let the navigation session get started, the camera must be switched on.

The screenshot represented in Pic. 24 may appear in all these situations:

- at the end of an uninstalling procedure (see par. 5)
- at the end of an installing procedure (see par. 6)
- any time a user logs in.



Starting from Pic. 23, press to start up navigation.
A screenshot with a summary of all the applications installed will appear (Pic. 25).



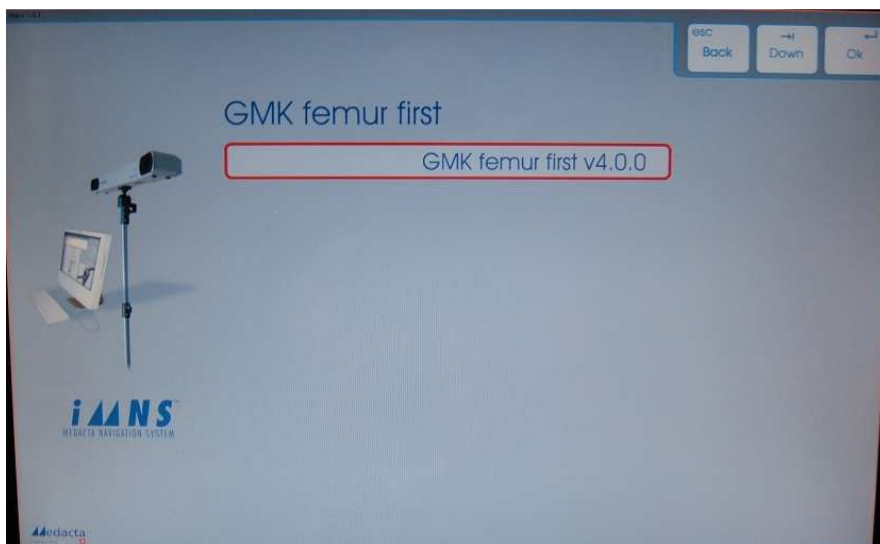
Pic. 25



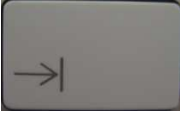

Use to select the application required, then press

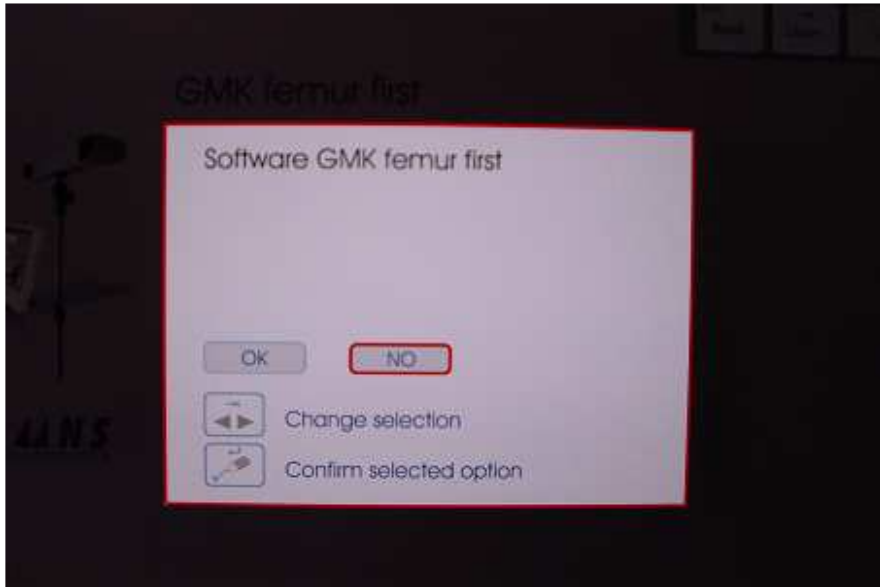


to get access to the list of all available versions (Pic. 26):



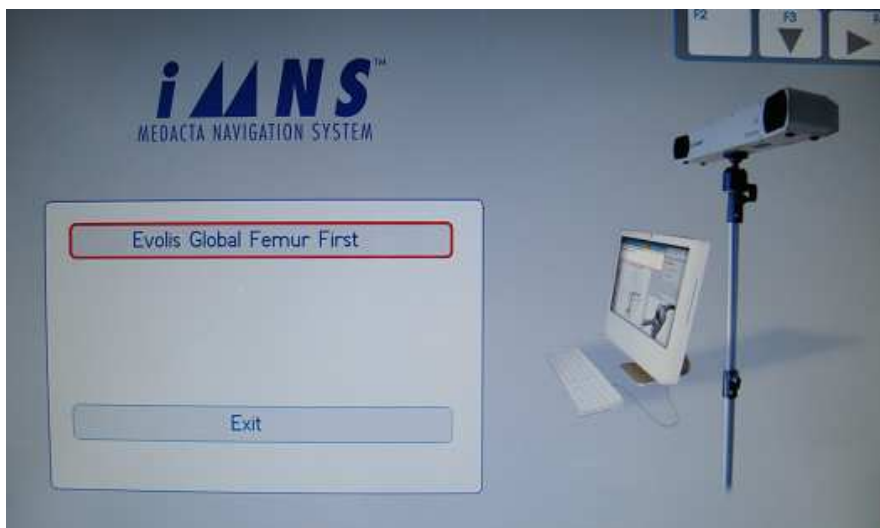
Pic. 26

Use  to select the correct software version, then press  to get access to a confirmation screenshot (Pic. 27):




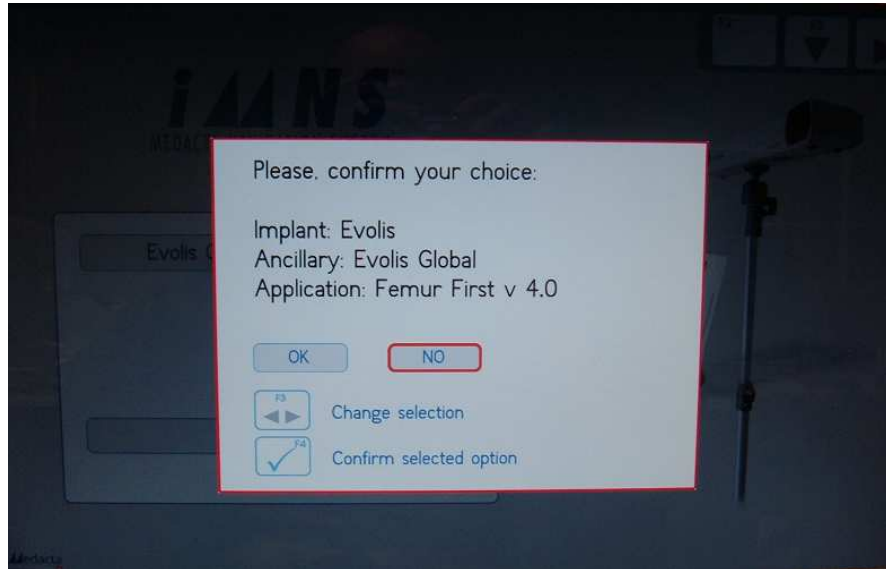
Pic. 27

Use "TAB" to select "OK" then press  to confirm the chosen application (Pic 28):



Pic. 28

Press  to confirm and gain access to a last confirmation screenshot (Pic. 29):




Pic. 29

Here all navigation options going to be used are summarized:

- implant
- ancillary
- application

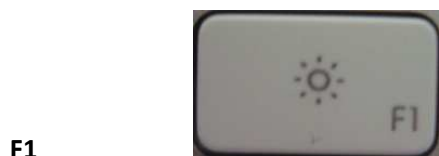
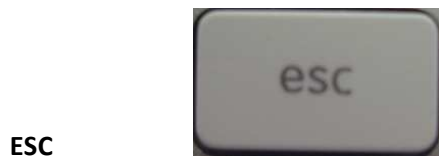
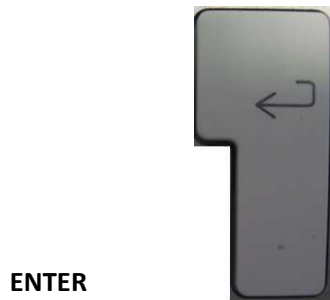
Make sure that the options are correct and in such a case, select “OK” by



then press  to start with navigation.

In case the options on the screen are not correct, select “NO” to verify the choices previously done.

APPENDIX – iMAC KEYS

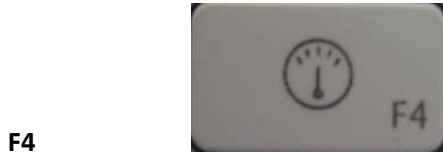


OR (depending on the keyboard version)

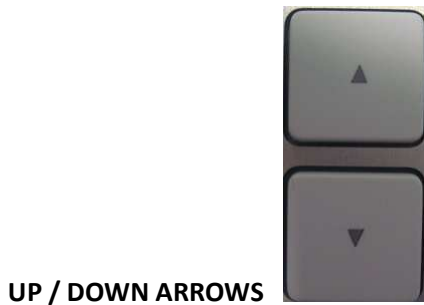




OR (depending on the keyboard version)



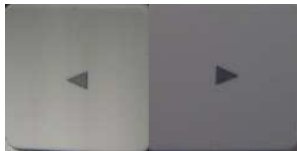
OR (depending on the keyboard version)



OR (depending on the keyboard version)



LEFT / RIGHT ARROWS



OR (depending on the keyboard version)

